



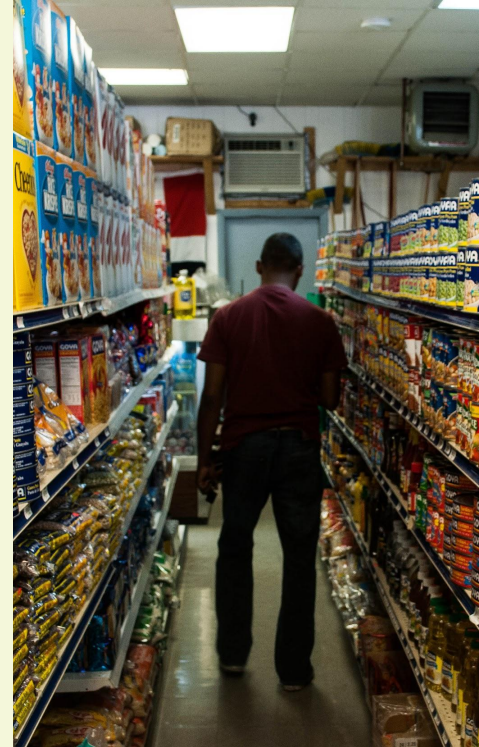
Sustainable Approaches to Food Desert Relief


Josie Martin, Louisville KY
YKAP 2022

“

Food deserts are geographic areas where residents have few to no convenient options for securing affordable and healthy foods”


– Annie E. Casey Foundation





44,000

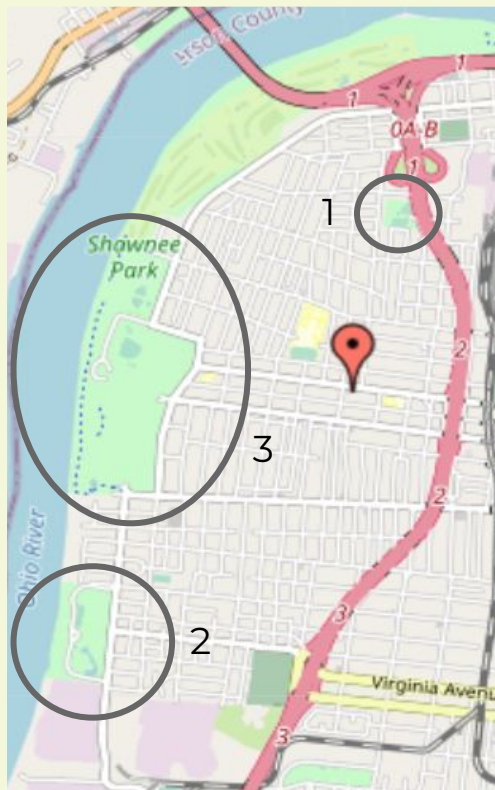
People in Louisville live within the boundaries of a food desert. This accounts for roughly 14% of the city's population based on 2020 census data.



A close-up photograph of a person's hands holding several ripe, red, pear-shaped tomatoes. One green tomato is also visible. The background is a soft-focus green, suggesting a garden setting. The image is partially covered by a dark green semi-transparent rectangle on the left side, which contains the title and list.

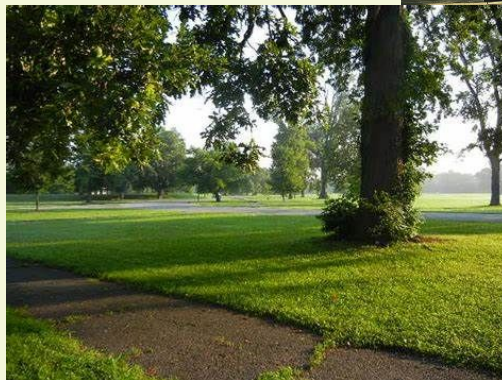
Community Gardens

- Provide fresh, affordable, healthy food
- Relatively inexpensive
- Minimal resource requirements
- Sustainable + eco friendly



1 - E. Leland Taylor Park (Left)

2 - Chickasaw Park (Below)



3 - Shawnee Park (Left)

Budget, Funding

- Use recycled materials for garden construction
- Farmers marketing
- Nonprofit partnerships





Dare to Care
Food Bank



First Steps

spread awareness and gain support from local officials and nonprofits in order to continue through with the action plan and provide equitable access to healthy, affordable food.

Sources

- <https://greaterlouisvilleproject.org/factors/food-desert/#:~:text=Louisville%20currently%20ranks%2010th%20among,mile%20away%20from%20a%20supermarket.>
- <https://www.ers.usda.gov/amber-waves/2011/december/data-feature-mapping-food-deserts-in-the-us/>
- <https://www.whas11.com/article/news/local/food-desert-louisville-kentucky-access/417-80acf629-3b64-453e-9954-6d8fb0e63eee>
- <https://www.courier-journal.com/story/news/local/2019/01/10/food-insecurity-how-louisvilles-working-end-food-deserts/2504301002/>
- <https://foodliteracyproject.org/>
- <https://www.aecf.org/blog/exploring-americas-food-deserts>
- <https://www.louisvillemap.com/west-louisville/>
- <https://seewhatgrows.org/3607-2/#:~:text=How%20much%20does%20a%20community%20garden%20cost%3F%20I,t.Columbia%20quotes%20an%20average%20start-up%20cost%20of%20%247%2C000-10%2C000.>





Thanks!

The floor is now open
for questions.

CREDITS: This presentation template was created by
Slidesgo, including icons by **Flaticon**, and
infographics & images by **Freepik**